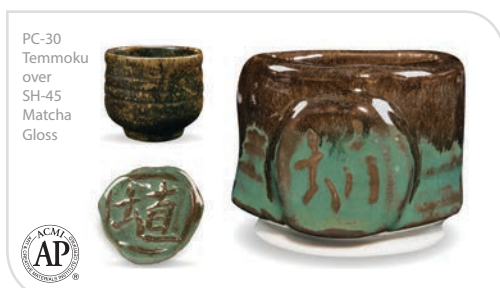
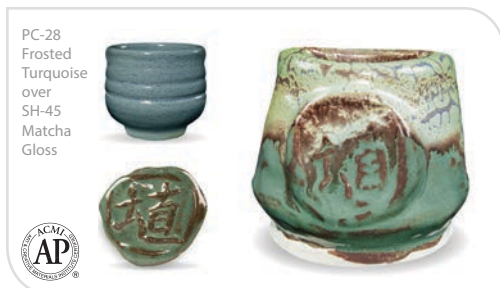
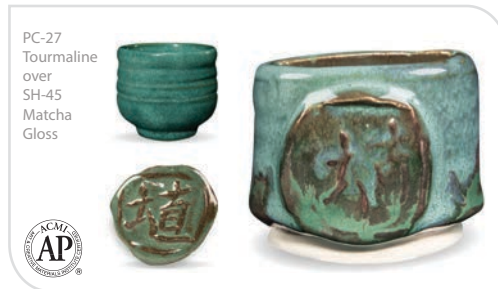
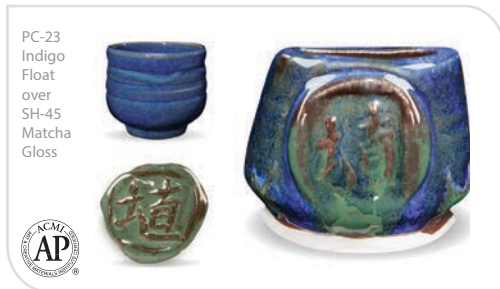
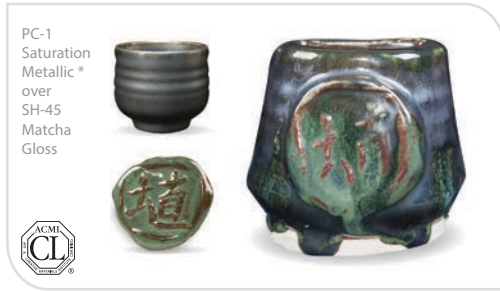




www.layeringpcs.info

# LAYERING Potter's Choice Shines

Cone 5/6



## over SH-45 Matcha Gloss

**SH-45 Layering Notes:** Brush on three layers of base coat. Brush on three layers of top coat. (Let dry between coats.)

**Clay:** AMACO® A-Mix White Stoneware No. 11

**Firing:** Test tiles have been fired to Cone 6

Join the conversation  
[www.facebook.com/groups/potterschoiceex](http://www.facebook.com/groups/potterschoiceex)



PC-61 Textured Amber over SH-45 Matcha Gloss  
on AMACO A-Mix White Stoneware No. 11 Clay



PC-33  
Iron  
Lustre  
over  
SH-45  
Matcha  
Gloss



PC-34  
Light  
Sepia  
over  
SH-45  
Matcha  
Gloss



PC-35  
Oil Spot  
over  
SH-45  
Matcha  
Gloss



PC-36  
Ironstone  
over  
SH-45  
Matcha  
Gloss



PC-37  
Smoked  
Sienna  
over  
SH-45  
Matcha  
Gloss



PC-39  
Umber  
Float  
over  
SH-45  
Matcha  
Gloss



PC-43  
Toasted  
Sage  
over  
SH-45  
Matcha  
Gloss



PC-45  
Dark  
Green  
over  
SH-45  
Matcha  
Gloss



PC-48  
Art Deco  
Green  
over  
SH-45  
Matcha  
Gloss



PC-49  
Frosted  
Melon  
over  
SH-45  
Matcha  
Gloss



PC-52  
Deep  
Sienna  
Speckle  
over  
SH-45  
Matcha  
Gloss



PC-53  
Ancient  
Jasper  
over  
SH-45  
Matcha  
Gloss



PC-55  
Chun  
Plum  
over  
SH-45  
Matcha  
Gloss



PC-57  
Smokey  
Merlot  
over  
SH-45  
Matcha  
Gloss



PC-60  
Salt  
Buff\*  
over  
SH-45  
Matcha  
Gloss



The Art & Creative Materials Institute AP (Approved Product) seal certifies this product to be safe for use by all ages. Conforms to ASTM D-4236.

The Art & Creative Materials Institute CL (Caution Label) seal restricts this product from children under the age of 13. Older users must follow all cautionary labeling. Conforms to ASTM D-4236.

PC-61  
Textured  
Amber  
over  
SH-45  
Matcha  
Gloss



PC-62  
Textured  
Amber  
Brown  
over  
SH-45  
Matcha  
Gloss

